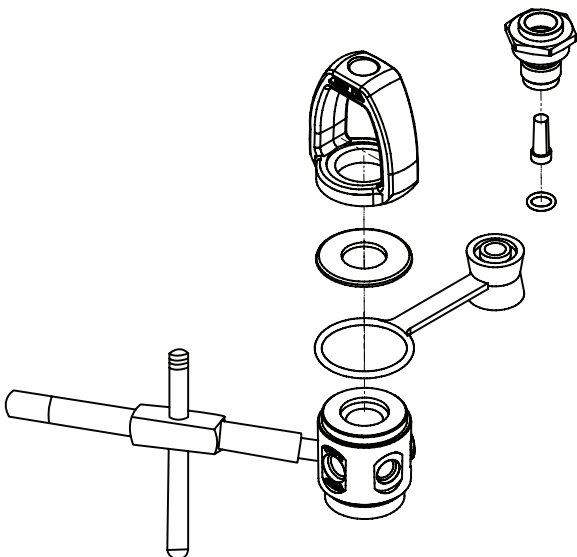


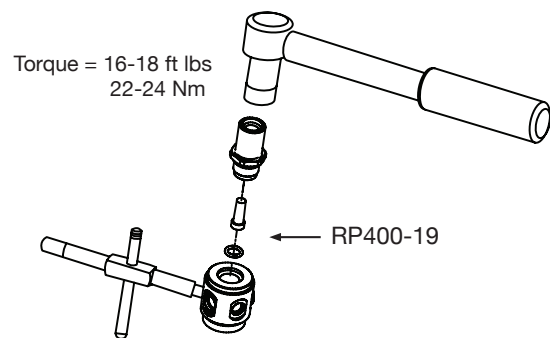
Removal of Yoke Assembly

1. Install vise mounting tool (p/n TL122) into one of the accessory ports.
2. Secure the tool into a bench vise with the first stage positioned vertically with the yoke facing up.
3. Remove the yoke screw.
4. Using a large 18" adjustable crescent wrench (p/n TL134), apply firm, steady force to the inlet fitting in a counter-clockwise fashion to loosen it. Remove the inlet fitting and the yoke from the regulator body.
5. Lift the dust cap and cosmetic ring off the regulator body.

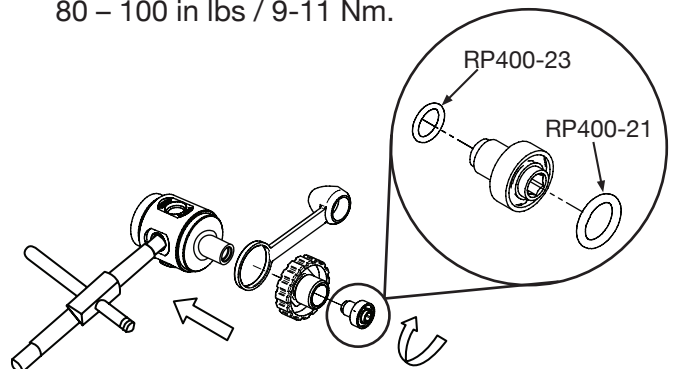


Installation of DIN Connector

1. Disassemble the handwheel retainer from the DIN housing and separate the parts.
2. Insert the filter, narrow end first into the bottom of the DIN housing followed by a non-lubricated o-ring (p/n RP400-19).
3. Thread the DIN housing clockwise into the main body. Using a 13/16" deep socket or a crow's foot, apply a torque of 16 – 18 ft lbs / 22-24 Nm.
4. Install the dust cap over the DIN housing.



5. Install the handwheel with the threads facing outwards over the DIN housing.
6. Thread on the handwheel retainer, clockwise, with its lightly lubricated o-ring (p/n RP400-23) on the back and its non-lubricated face o-ring (p/n RP400-21), to the front.
7. Using a torque wrench with a 6mm hex key, tighten the handwheel retainer to 80 – 100 in lbs / 9-11 Nm.



Check your work

1. Install first stage into a din cylinder valve. Slowly pressurize it. Immerse the first stage, with its newly installed connector, into a tub of water to check for leaks.